

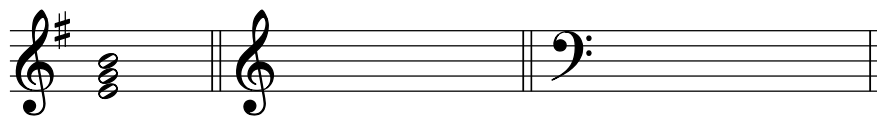
Entrance Examination (example) Bachelor of Music / Classical Music

THEORETICAL SKILLS

Name:

Principal Subject:

EXERCISE 1: Note the key signs and chords.



E minor: I IV₄⁶ B minor: VII⁷ V₅⁶ A major: IV⁶ I₄⁶ V²

EXERCISE 2: - give an example of relativ keys

.....

- what is the technical term for the relationship

between G major and G minor?

EXERCISE 3: *Rigaudon, Johann Hasse*

- it's always a good idea to sing the melody before playing it. What are obvious places for breathing? (note in the score your phrasings moments)

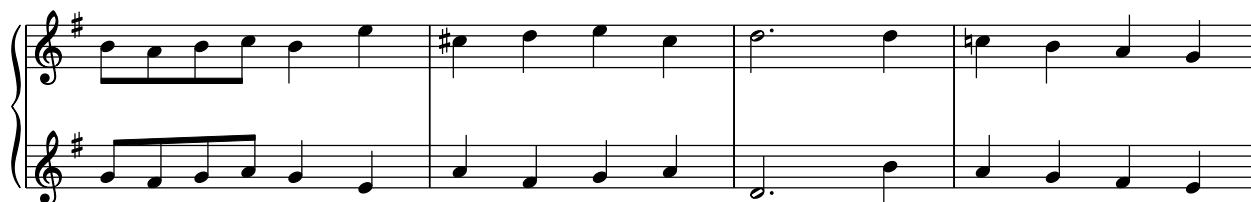
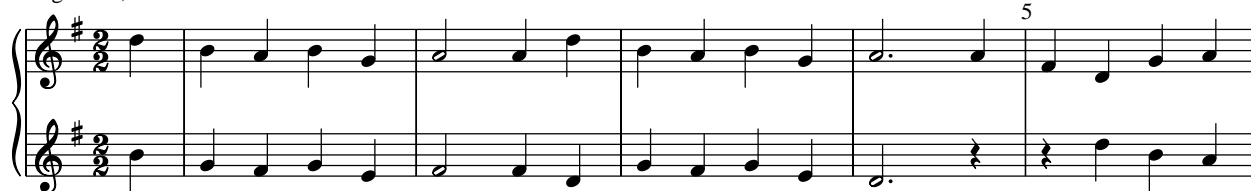
- the composer modulates to which key? *KEY* =

- the composer confirms this second key with a cadence. In which bars do you see the cadence?

BAR =

- what is the best qualification for this piece, homophonic or polyphonic? Explain your answer.

Rigaudon, Johann Hasse



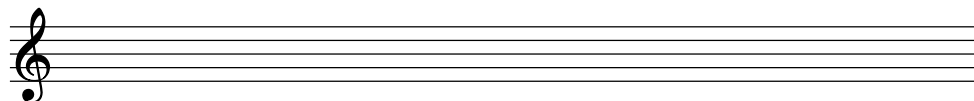
→ → see next page!



EXERCISE 4 *Melody, Joseph Haydn*

- add the correct rest or rests at the places marked with an arrow

- transpose the melody a major third lower, add also the new key sign



EXERCISE 5 Below are given a set of notes without rhythm, meter and bar lines.
The key is G major and notes together form chords (triads and seventh chords)
Create a melody in a 3/4th meter following harmonic logic.
Use your own rhythm.

EXAMPLE

